

Brightlayer Data Centers suite



**Scalable digital solutions**  
for single- and multi-site  
data centers of all sizes

**EATON**

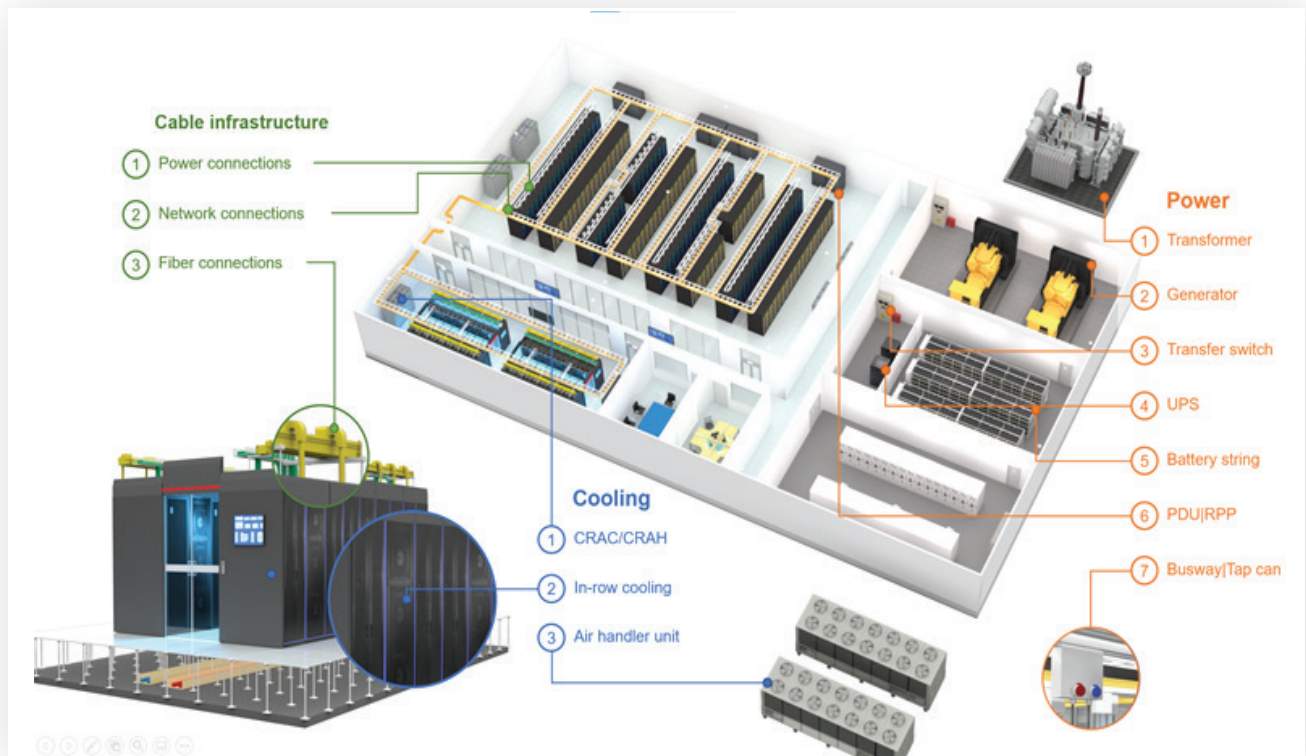
*Powering Business Worldwide*

# Take your data center and distributed IT operations to the next level

As our world becomes increasingly reliant on digital technologies, keeping your data center running around the clock has never been more important. Proactively identifying and fixing potential issues before they wreak havoc is paramount. But how do you do that when you're lacking the insights you need? And what about everything else you need to do, like managing asset lifecycle and planning for future capacity?

To efficiently manage an increasingly complex ecosystem of IT, cooling and power assets with significant interdependencies, data centers of all sizes—from enterprise to colocation and multi-tenant to edge and hyperscale—must leverage software to bring IT and operational technology (OT) together.

# See your operation clearly with the Brightlayer Data Centers suite



Manage your complex ecosystem of IT and OT assets with the Brightlayer Data Centers suite.

The Brightlayer Data Centers suite is a portfolio of digital solutions that will enable you to efficiently manage your IT and OT assets in a single, native application, providing full system visibility so you can keep your operation running and spend more time on what you need to accomplish.



## The software will enable you to:

- **Aggregate your data and put it to work.** From managing capacity and asset life-cycles, to knowing when and where to add new assets, you will work faster and easier when you have reliable information at your fingertips.
- **Visualize your entire operation in real time.** Increase business continuity and network security with a simplified, centralized view of errors and actions required across your system.
- **Maximize operational efficiency without sacrificing resiliency.** Our solutions will help you manage power and automate equipment at the device level, mitigate disaster, reduce downtime and run predictive analysis so you stay a step ahead.

# Three products. One digital platform.

## Better together.

The Brightlayer Data Centers suite includes three products that can be combined in a single, native application based on your needs, enabling you to streamline and optimize your data center like never before. Choose the features and functionality you need to manage, monitor and control your operations—from IT and/or OT assets to network-connected uninterruptible power supplies (UPSs) and power distribution units (PDUs) located across multiple locations and edge sites.

And because the platform is scalable, it provides an easy upgrade path. You can add more functionality over time by simply applying an updated license key—no need to migrate data, or change or integrate multiple software platforms.



### Data Center Performance Management software

Enables you to maximize IT application uptime while minimizing capital and operating expenditures. It monitors, trends, alerts, reports and manages your power, space, connectivity and cooling resources across one or more facilities. It also provides the insights you need to optimize your operations over time, so you can increase your data center's performance while managing costs.



### Distributed IT Performance Management software

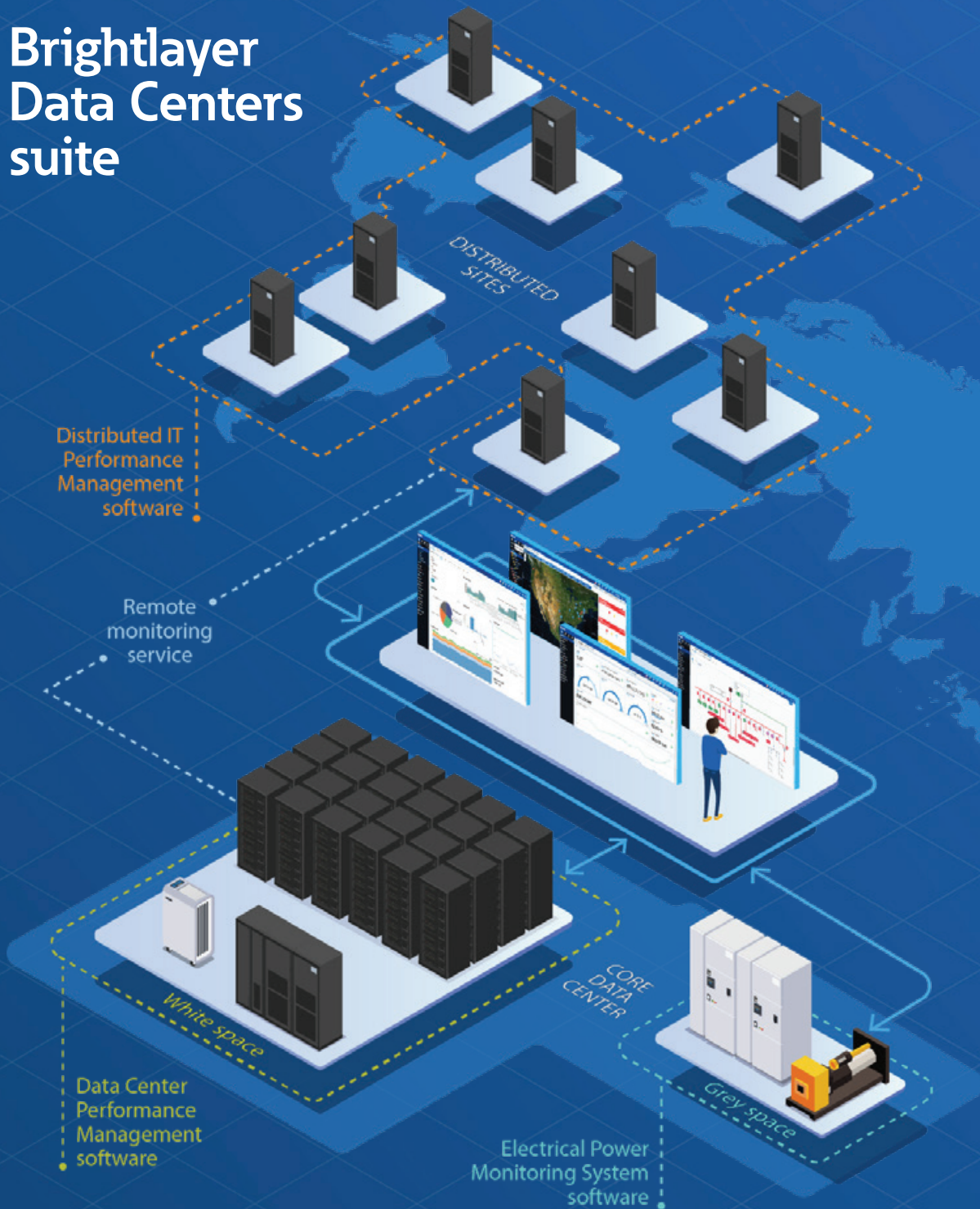
Provides deep intelligence into network-connected assets such as PDUs and UPSs located across multiple sites—regardless of vendor. This enables you to manage and control the assets installed at your remote locations, and proactively identify and automate actions to prevent IT equipment from going down.



### Electrical Power Monitoring System software

Delivers real-time and historical visibility into an electrical power system at a single data center or multiple facility locations. This helps you maximize equipment uptime, quickly resolve and identify the root-cause of unexpected issues, and understand your facility's use of water, air, gas, electricity and steam to reduce operating costs and meet sustainability goals.

# Brightlayer Data Centers suite



For customers of Eaton single- and three-phase UPSs, the suite also includes an around-the-clock remote monitoring service that aggregates data from your connected UPSs and dispatches an Eaton field technician when a critical event occurs. The service applies analytics to predict component failure and prevent unplanned downtime, and can be connected to other Brightlayer Data Centers suite applications to provide a complete monitoring and hybrid remote service response.

# Data Center Performance Management

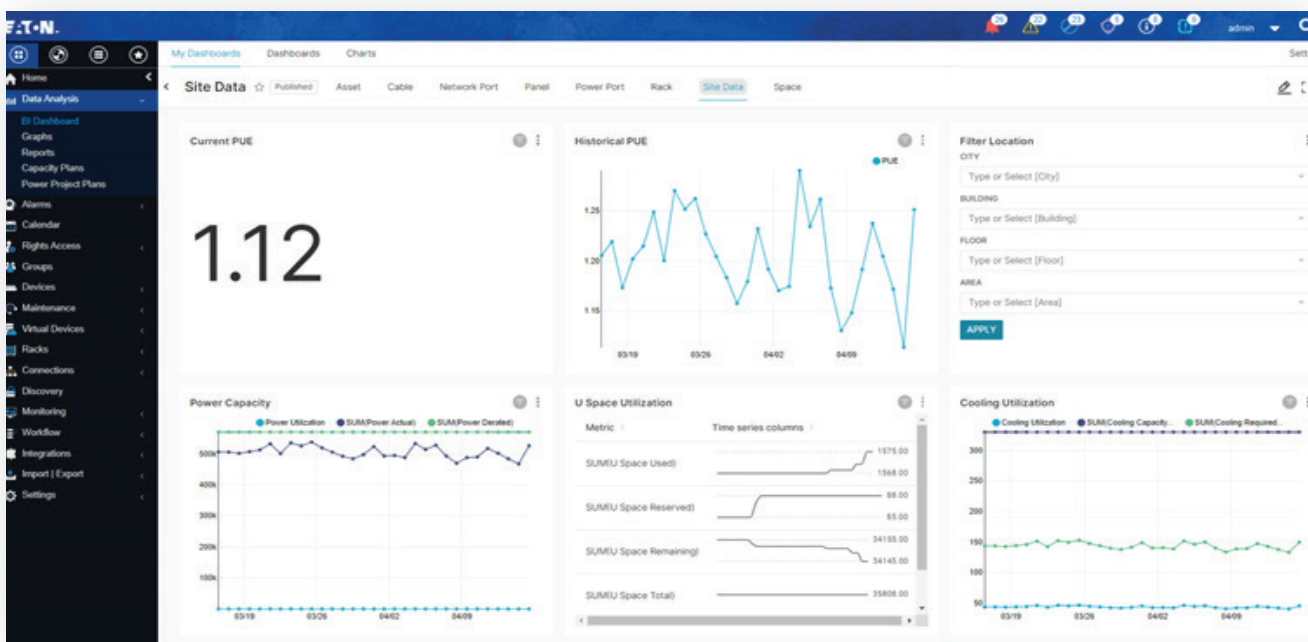
## Go beyond data center infrastructure management

Effectively managing a data center requires more than just managing and monitoring your power, space and cooling resources. You need meaningful insights so you can make more impactful decisions that will keep your operation running while enabling you to manage its performance like never before.

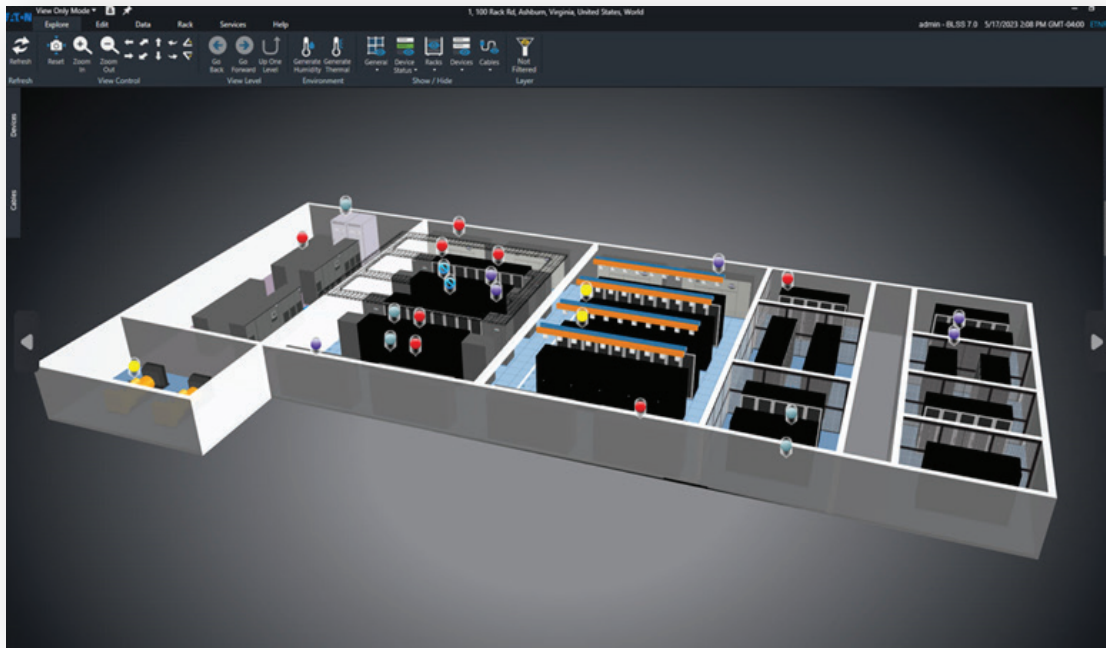
With Data Center Performance Management (DCPM) software, you can gain efficiencies, make sense of your data and create a unified, configurable solution with the capabilities you need.

### Manage and monitor assets to gain efficiencies

- **Manage your end-to-end power chain**, and know where your assets are located and what the environmental conditions are across one or more facilities to minimize operational costs and stranded capacity.
- **Centrally track asset lifecycle for IT and OT assets**, and reduce operational costs with real-time data and automated alerts.
- **View real-time and historical data** regardless of device vendor, vintage or protocol, and receive automated, customized alerts via text message, email reports and/or system notifications when issues arise. You decide when and how you're notified and if an alert should be escalated via a notification chain.



Monitor power, space and cooling resources over time to identify trends and outliers that need to be addressed.



3D visualization tool provides rack-level insights.

## Take data center infrastructure management to the next level

- **Visualize your data center**—from a campus or facility to a room, rack or device—with user-defined 2D and 3D visualizations for temperature and humidity, electrical utilization, critical power chain and more so you can make informed decisions.
- **Access more than 80 standard reports** with an optional business intelligence dashboard that provides user-defined report tools and a flexible visualization of alarms, asset capacity, efficiency, metrics, service and systems for near real-time visibility into key performance indicators, such as power usage effectiveness (PUE) and capacity utilization, so you can ensure your data center is operating as expected.

## Integrate with your existing software to create a unified solution

- **Integrate with VMware and other software you're already using**, such as building management system (BMS), configuration management database (CMDB) and IT service management (ITSM) applications, to create a unified, cohesive software solution that improves efficiency, increases productivity and data accuracy, improves decision making and reduces costs.

Learn more at  
[Eaton.com/DCPM](https://Eaton.com/DCPM)

# Distributed IT Performance Management

## Monitor assets at the edge

If your team's also responsible for managing and maintaining distributed IT equipment like PDUs and UPSs across multiple locations—from retail stores to healthcare, educational and governmental facilities—you know how time consuming that responsibility can be.

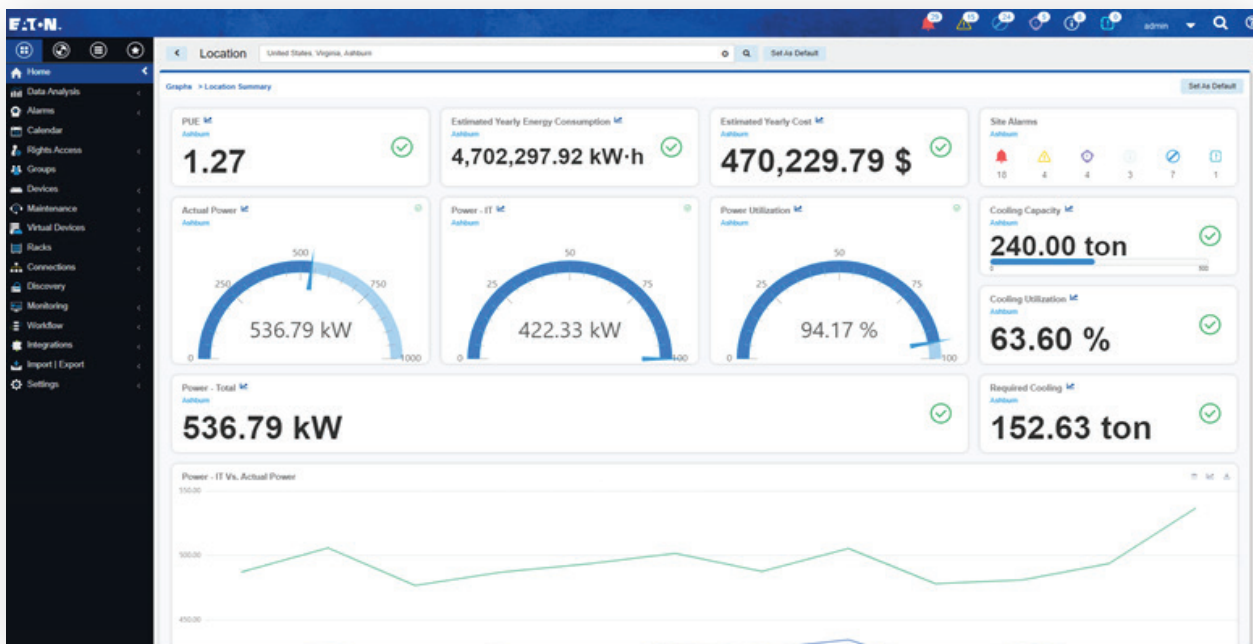
When essential equipment unexpectedly goes down at a remote site, you must fix the problem quickly to minimize the impact to your organization's bottom line.

That's hard to do—especially if you don't have skilled, on-site IT resources.

Distributed IT Performance Management (DITPM) software allows you to remotely manage and control network-connected assets, regardless of the vendor or their location. It provides full visibility into your equipment, and enables you to remotely troubleshoot and resolve issues, and update firmware to gain efficiencies that save time and money.

### Know what's happening across your distributed IT environment

- **View real-time reports**, trend charts and dashboards, and receive real-time alerts that are prioritized by severity and escalated when needed.



Access real-time information on how your system is performing by location.



## UPS Battery Report - MJW

Row Limit	10000	Date Range	2023-04-04 - 2023-04-04
Sort By	Device Group		

### Public, Texas Medical Center East

Type	Manufacturer	Model	Device Name	Output Load (%)	Seconds On Battery (sec)	Last Replace Date	Battery Time Remaining (sec)	Serial Number	Temperature (°F)
UPS - Rackmount	Eaton	5P1000R	Rack UPS Office 09 - 5P1000	66	1362	2021-03-21 19:00:00 EDT	1681	G33483982	79
UPS - Rackmount	Eaton	5P1000R	Rack UPS Office 02 - 5P1000	24	1010	2022-06-14 19:00:00 EDT	1663	G33483975	69
UPS - Rackmount	Eaton	5P1000R	Rack UPS - 5P1000 -19	48	1571	2021-03-21 19:00:00 EDT	1548	G33483992	81
UPS - Rackmount	Eaton	5P1000R	Rack UPS Office 07 - 5P1000	64	1678	2021-03-21 19:00:00 EDT	1544	G33483980	55

### Public, Texas Medical Center West

Type	Manufacturer	Model	Device Name	Output Load (%)	Seconds On Battery (sec)	Last Replace Date	Battery Time Remaining (sec)	Serial Number	Temperature (°F)
------	--------------	-------	-------------	-----------------	--------------------------	-------------------	------------------------------	---------------	------------------

Battery health report predicts remaining battery life so you can proactively replace them before they fail.

## Quickly troubleshoot and resolve equipment issues to reduce truck rolls

- **Remotely control PDU outlets and UPS load segments**—regardless of the vendor—powercycle devices, diagnose and take proactive corrective action when needed.
- **Automate device response and/or shutdown** during critical power events or environmental stress conditions, such as high temperature, to protect equipment.

## Fine-tune your operation

- **Update and configure Eaton rackmount PDU and rackmount UPS network cards** in minutes, eliminating the need for in-person updates.
- **Use reports, trend charts, dashboards and visualizations** to understand power utilization, alarm frequency, power connections and more.

Learn more at  
[Eaton.com/DITPM](https://Eaton.com/DITPM)

# Electrical Power Monitoring System

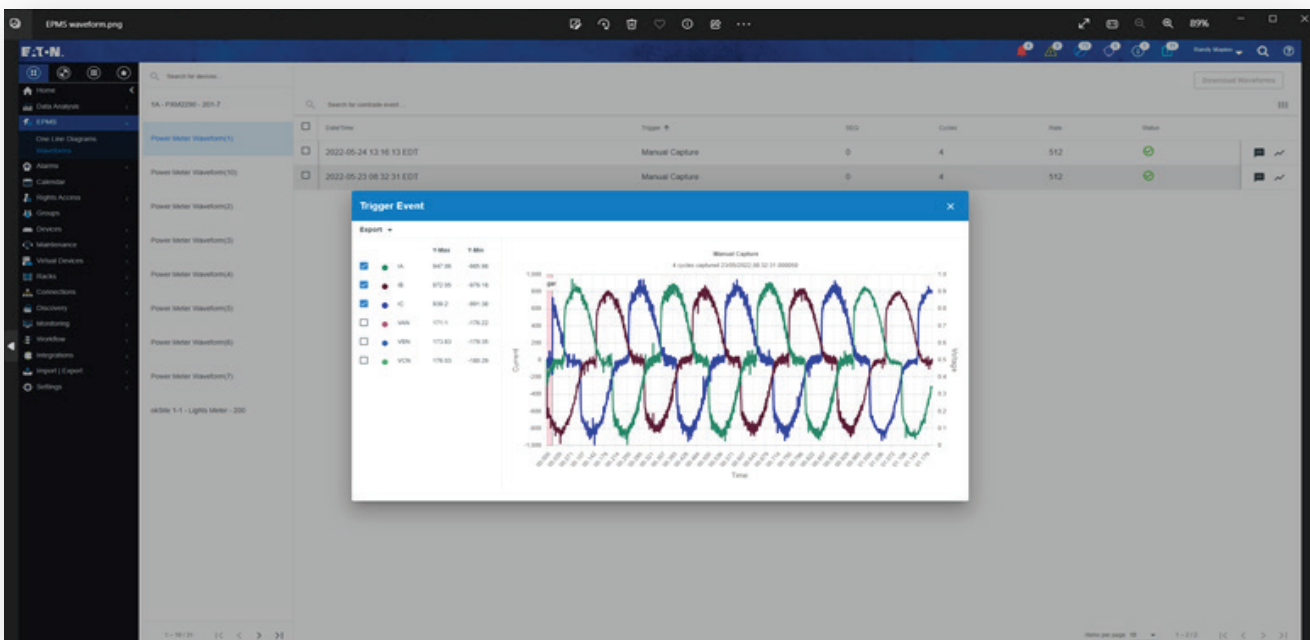
Avoid unplanned downtime, reduce operating costs and meet sustainability goals

As the demand for data continues to rise at the same time data centers are increasingly transitioning to renewable energy sources and setting short- and long-term energy consumption reduction goals, it's essential to have complete insight into real-time energy consumption and trended data, and be able to quickly resolve power issues when trouble strikes.

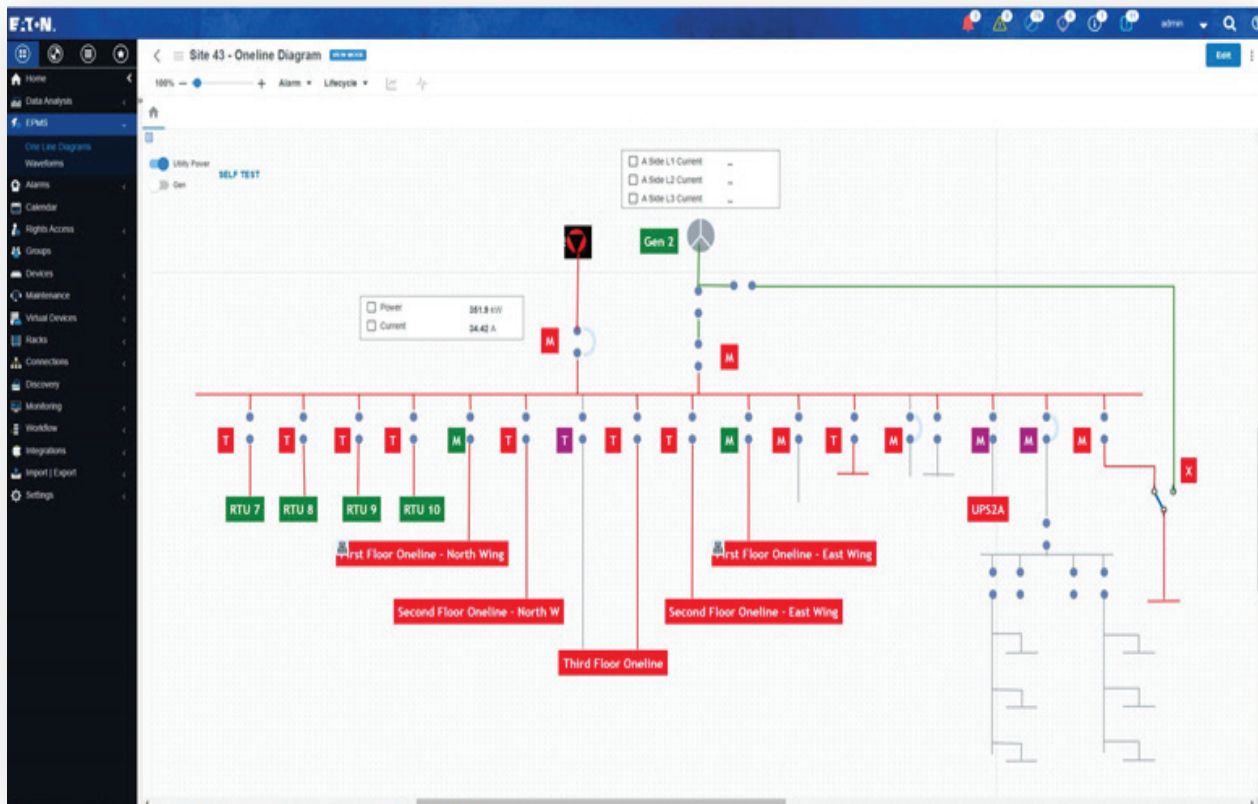
With Electrical Power Monitoring System (EPMS) software, you can maximize data center uptime, quickly resolve and identify the root-cause of unexpected issues, and understand your facility's use of water, air, gas, electricity and steam (WAGES) to reduce consumption or change usage patterns.

## Quickly resolve issues and identify root-causes

- **Expedite analysis, identify and resolve issues, and prevent reoccurrence** through comprehensive power quality and waveform analysis, a historical high-resolution dataset and custom one-line diagrams.
- **Push notifications** can also be sent to other software management systems to further streamline management.



Waveform analysis allows you to identify, trace and analyze power quality events to quickly resolve and prevent occurrence.



One-line diagrams provide a simple view of your facility's electrical distribution infrastructure.

## Understand resource consumption

- **Get clarity and insight into where and when energy is flowing** through your facility to help make decisions, reduce or change consumption patterns, and lower utility costs.
- **View stored, normalized data for review and analysis**, compliance reporting and accurate change management forecasting.

## Maximize facility uptime

- **By monitoring all aspects of an electrical system and normalizing the data** for review and analysis, you can understand the operational behavior of your facility and identify outliers to proactively mitigate potential outage-causing issues.

Learn more at  
[Eaton.com/EPMS](https://www.eaton.com/EPMS)

# Remote monitoring service

## Harness the power of predictive

What if you could predict future outages days or even weeks ahead of time? Our cloud-based remote monitoring service, also known as PredictPulse™, collects data from compatible Eaton single- and 3-phase UPSs, and applies analytics to predict component failure and prevent

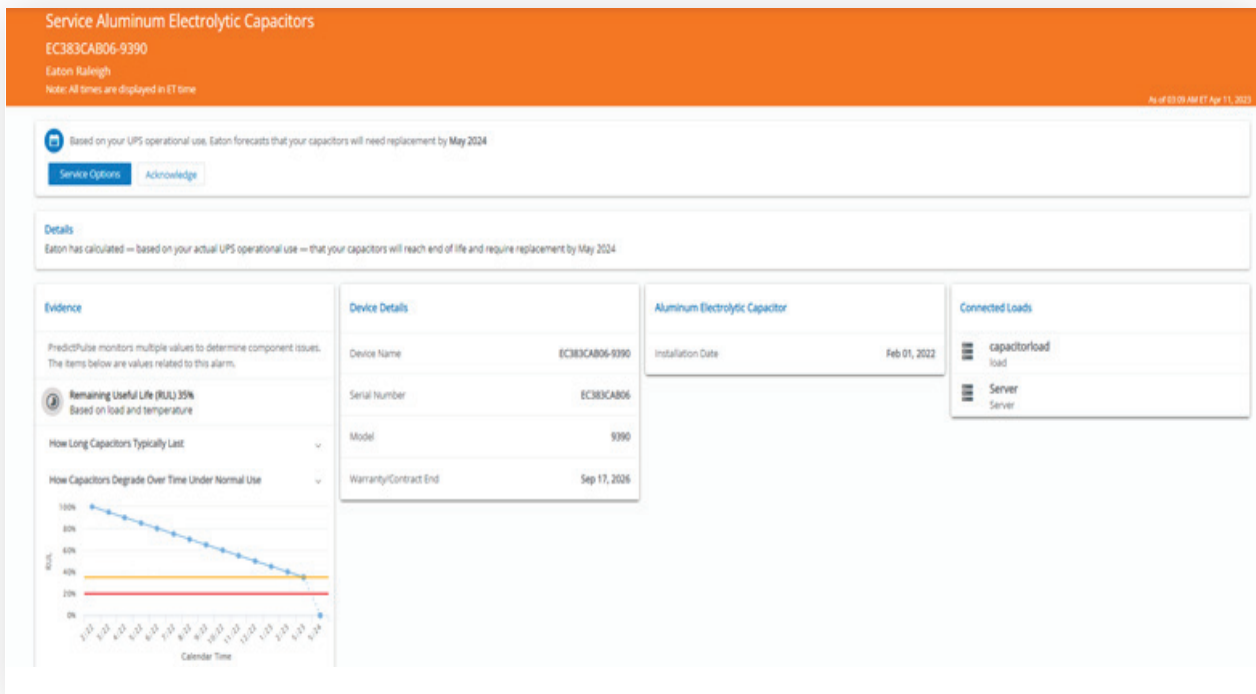
unplanned downtime. The service also aggregates data from your connected UPSs and dispatches Eaton field technicians if a critical event occurs. View compatible Eaton UPSs and network cards at [Eaton.com/RemoteMonitoringServiceCompatibility](https://Eaton.com/RemoteMonitoringServiceCompatibility).

### Advanced analytics and diagnostics increase peace of mind

- **Leverages analytics from your connected UPSs** to predict component failure—often months in advance—providing time for budgetary planning and equipment replacement.
- **Enables Eaton field technicians to diagnose most issues remotely.** This ensures they'll have the correct parts when they arrive to service your equipment, enabling you to get your system back up and running faster, and saving money.



Eaton technician inspecting an Eaton 9395XC UPS.



Monthly capacitors report forecasts remaining useful life so you can proactively replace them.

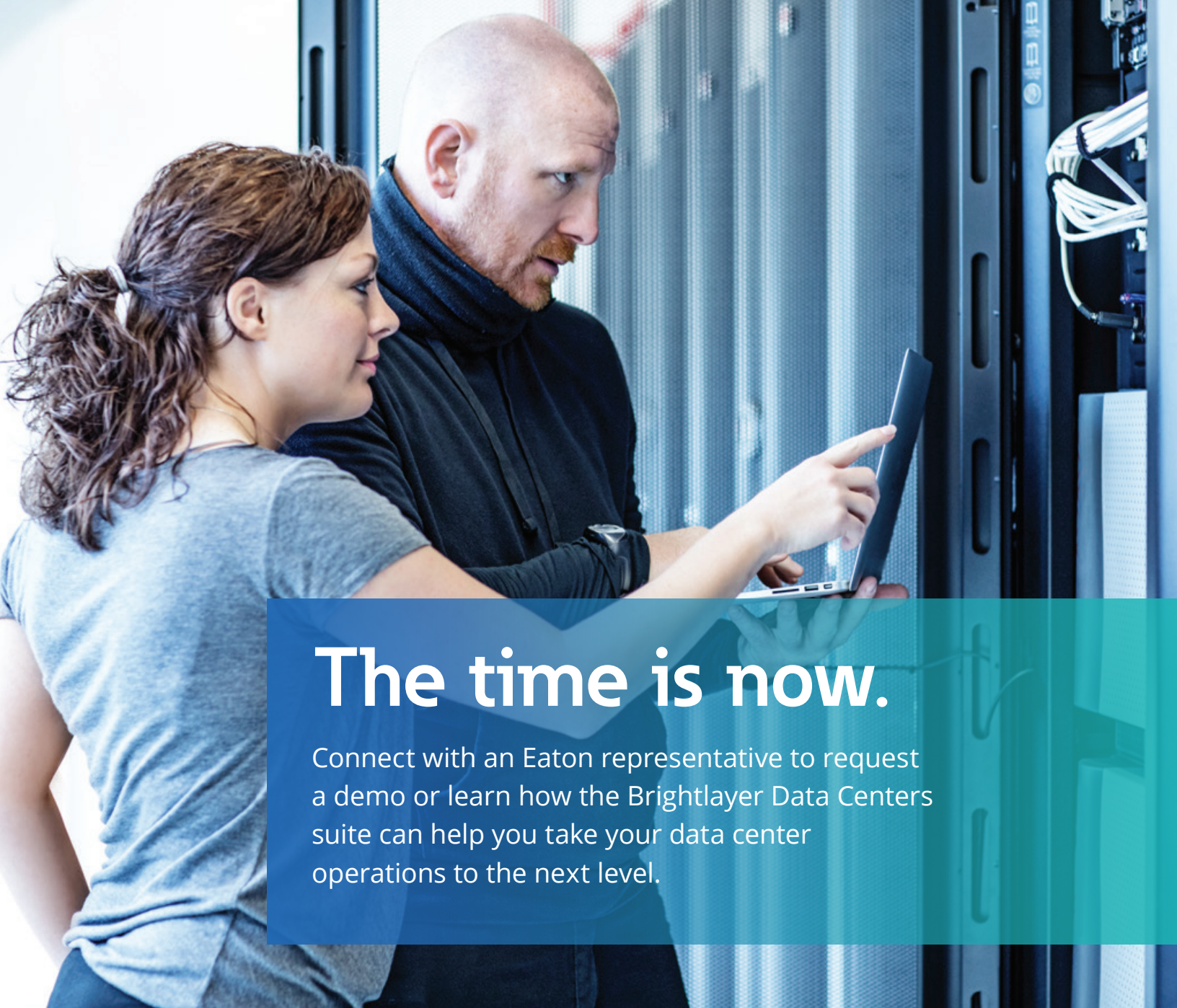
## Monthly reports and customizable alarm notifications

- **Gain component-level visibility** into batteries, capacitors and fans so you can optimize service and maintenance planning.
- **Configure alarm notifications to meet your needs** and preferences. You define the type—text message, email or phone call—priority of critical events and who needs to be notified via their preferred method.

## Expedited repairs to minimize business impact

- **When the unexpected happens, Eaton responds quickly**, typically notifying you in less than 15 minutes. Our field technicians will visit your site to expedite component and/or UPS replacement—saving time and money, and ensuring critical system up-time.

Learn more at  
[Eaton.com/RemoteMonitoringServiceCompatibility](https://Eaton.com/RemoteMonitoringServiceCompatibility)



# The time is now.

Connect with an Eaton representative to request a demo or learn how the Brightlayer Data Centers suite can help you take your data center operations to the next level.

Learn more at  
[Eaton.com/BrightlayerDataCenters](https://Eaton.com/BrightlayerDataCenters)

**Eaton**  
1000 Eaton Boulevard  
Cleveland, OH 44122  
United States  
[Eaton.com](https://Eaton.com)

© 2023 Eaton  
All Rights Reserved  
Printed in USA  
Publication No. BR152097EN / GG  
October 2023

Eaton is a registered trademark.

All other trademarks are property of their respective owners.

Follow us on social media to get the latest product and support information.

